

# Web 2.0, map production & publishing and geospatial information dissemination

Professor William Cartwright

President, International Cartographic  
Association

18th UNRCC for Asia and the Pacific, Bangkok, Thailand, 26-29 October 2009



# Web 2.0

O'Reilly (2004)  
"Open Source Paradigm Shift"

**What is changing?**

**Access to information and media**

**Ubiquitous devices**

**Geo-enabled consumer electronic products**

**Web 2.0 and Social Software**

**Movement of data repositories**

**New players in geospatial**

**Public interest in mapping**

**Technologically aware and savvy producer/users**

## **Web 2.0**

**Presents a new view on what can be done**

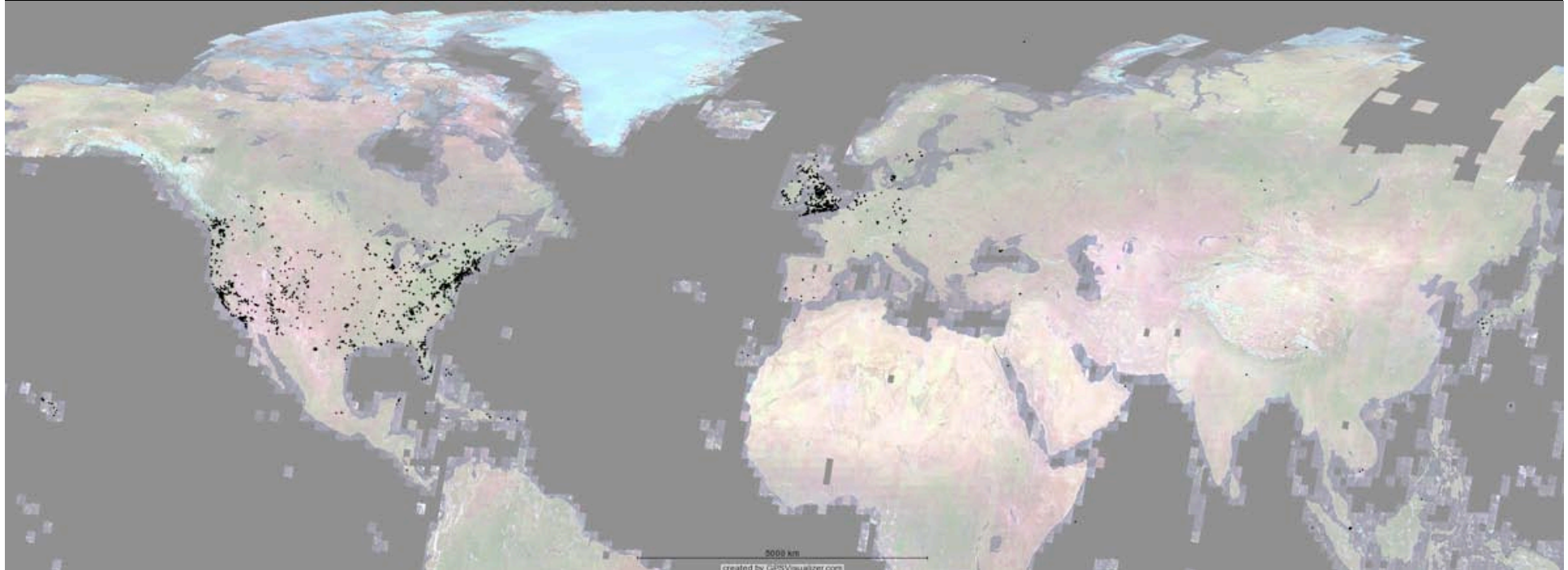
**Presents a new genre of publishing**

**(Including cartographic publishing)**

# Web 2.0 and location

# Social network and sharing sites

- Flickr
  - 90 million geotagged images



[http://farm1.static.flickr.com/13/17701182\\_ce6291a1cc\\_o.jpg](http://farm1.static.flickr.com/13/17701182_ce6291a1cc_o.jpg)

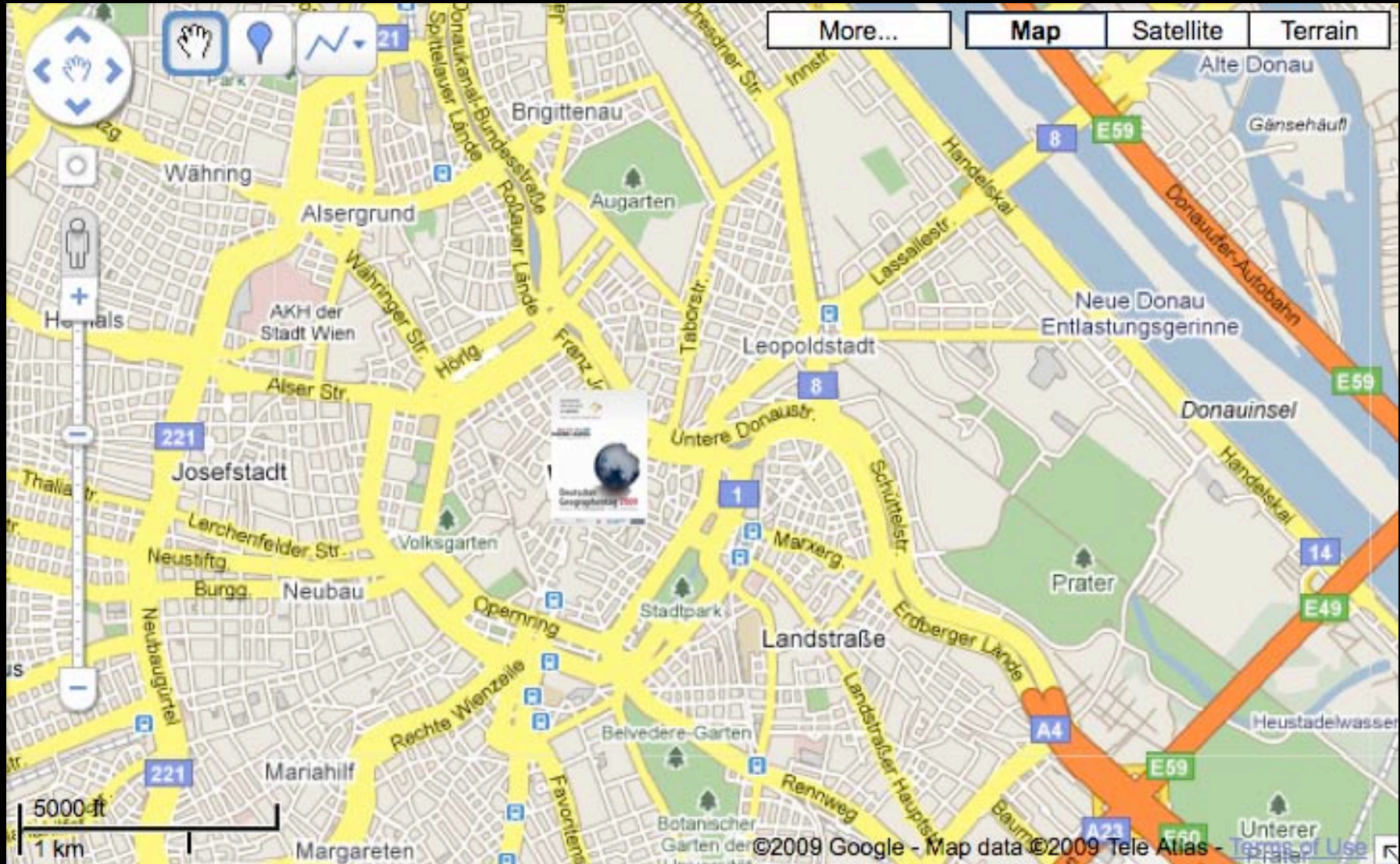
# Web 2.0 and mapping



# Community involvement



**User-generated content**



# Find your new home...

[bookmark and share](#) | [tell us what you think!](#)



I need to commute to the London underground station

Victoria

I can afford a  property

For less than

It shouldn't take longer than  minutes from station to station.



## YOU COULD LIVE NEAR Chiswick Park

Average journey time:

- 21 minutes by underground
- 2 hours 5 minutes walking
- 1 hour 4 minutes cycling

Average property price: £245,654



Ads by Google [Property East London](#) [Price Hotel London](#) [South West London](#) [Rent House London](#) [Rooms to Let London](#)

Powered by  nestoria

Where Can I Live: [About this project](#) | [Sitemap](#) | [Feedback](#) | [Privacy policy](#) | [Terms & conditions](#) | [House prices in Victoria - trends](#)

**User-generated content**

**User-generated content**



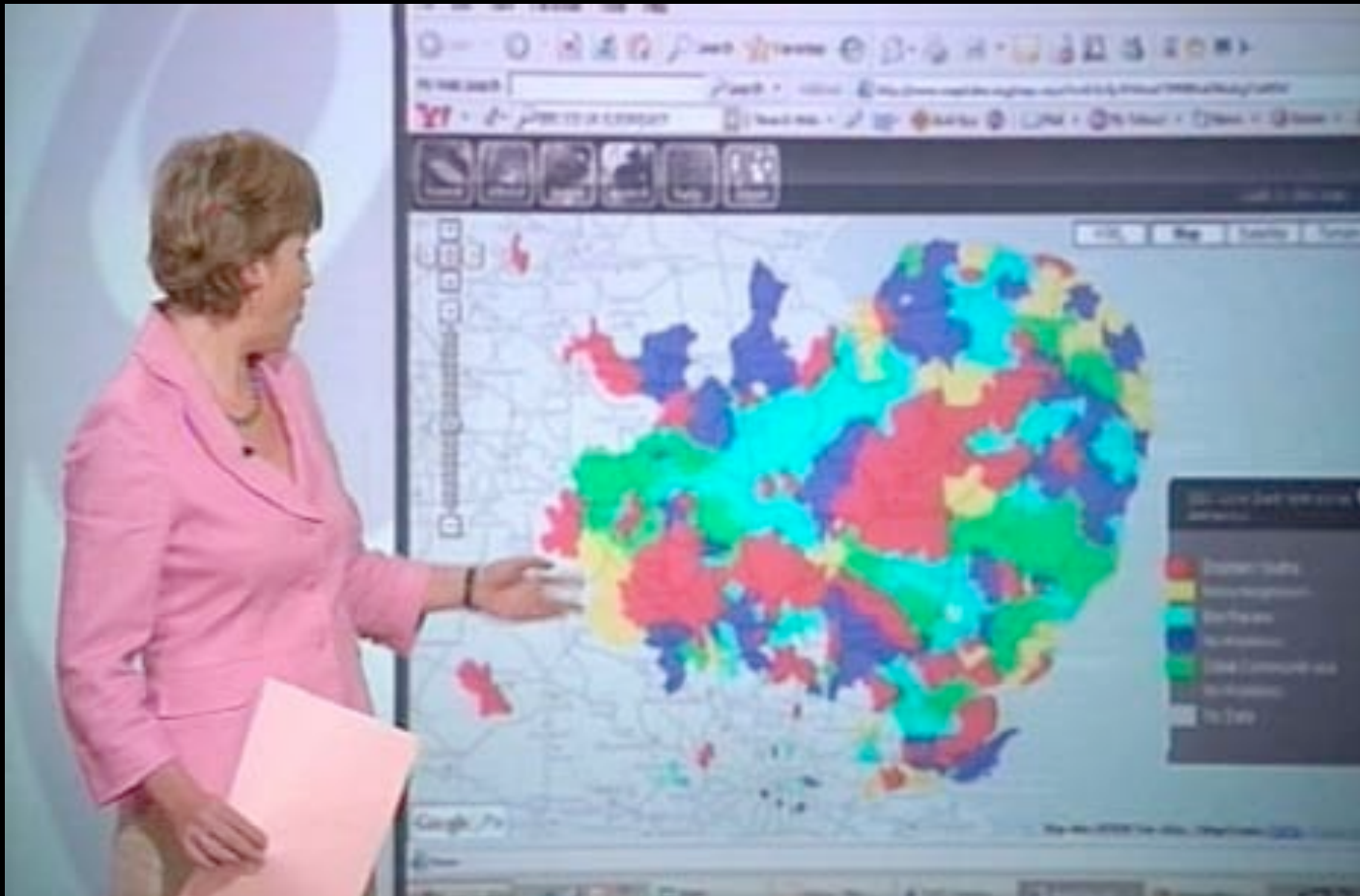
**Crowdsourcing**

**open**



**closed**





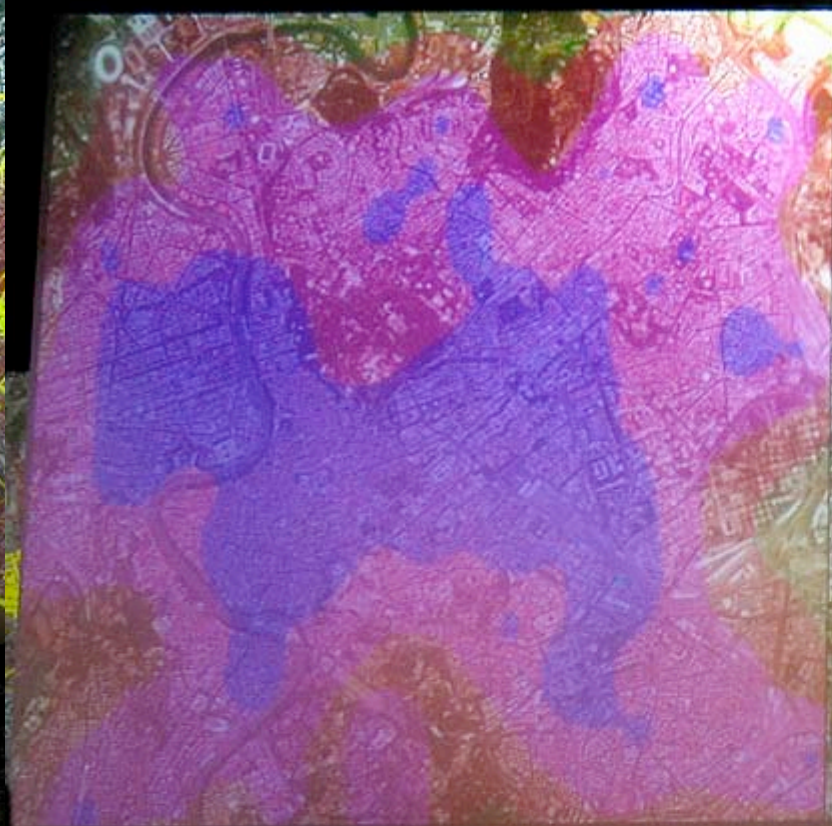
"Crowd sourcing"

CASA

Mapping Anti-Social Behaviour in East Anglia Using *MapTube* on BBC TV Look East



REAL TIME 15:34



00:10

night morning afternoon evening

15:45

...ectively. In the  
...do the houses  
...in the 500  
...to 11,200. These  
...and roads and the  
...represented by the  
...map. Each time a  
...area covered by a  
...of about 1000.

YESTERDAY 2006-09-05







**User-generated content**



**Crowdsourcing**

**open**



**closed**



**User-generated content**



**Crowdsourcing**

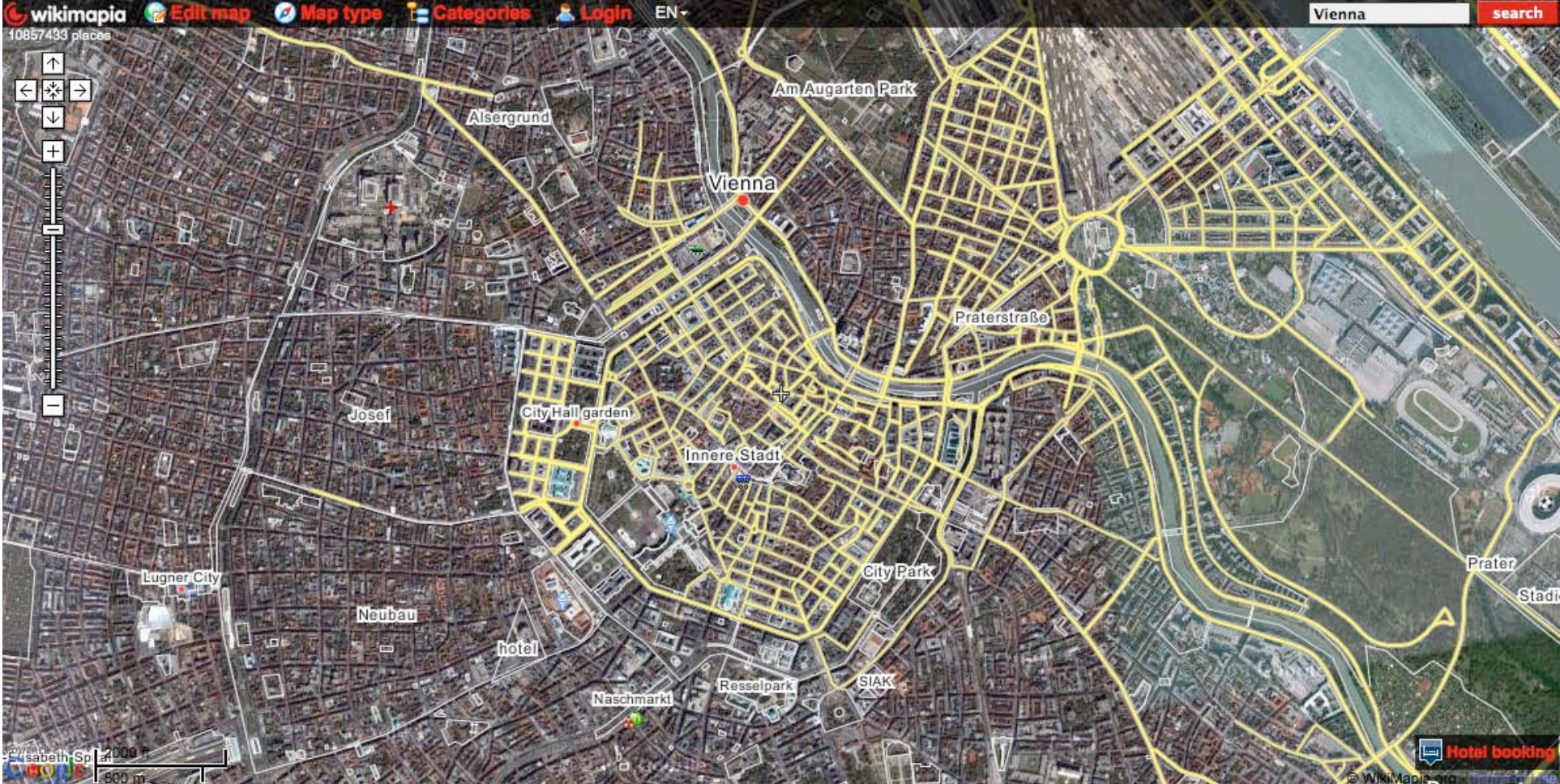
**open**



**closed**



**Volunteered geographic information**



*WikiMapia*

## OpenStreetMap



The Free Wiki World Map

OpenStreetMap is a free editable map of the whole world. It is made by people like you.

OpenStreetMap allows you to view, edit and use geographical data in a collaborative way from anywhere on Earth.

OpenStreetMap's hosting is kindly supported by the [UCL VR Centre](#) and [bytemark](#).

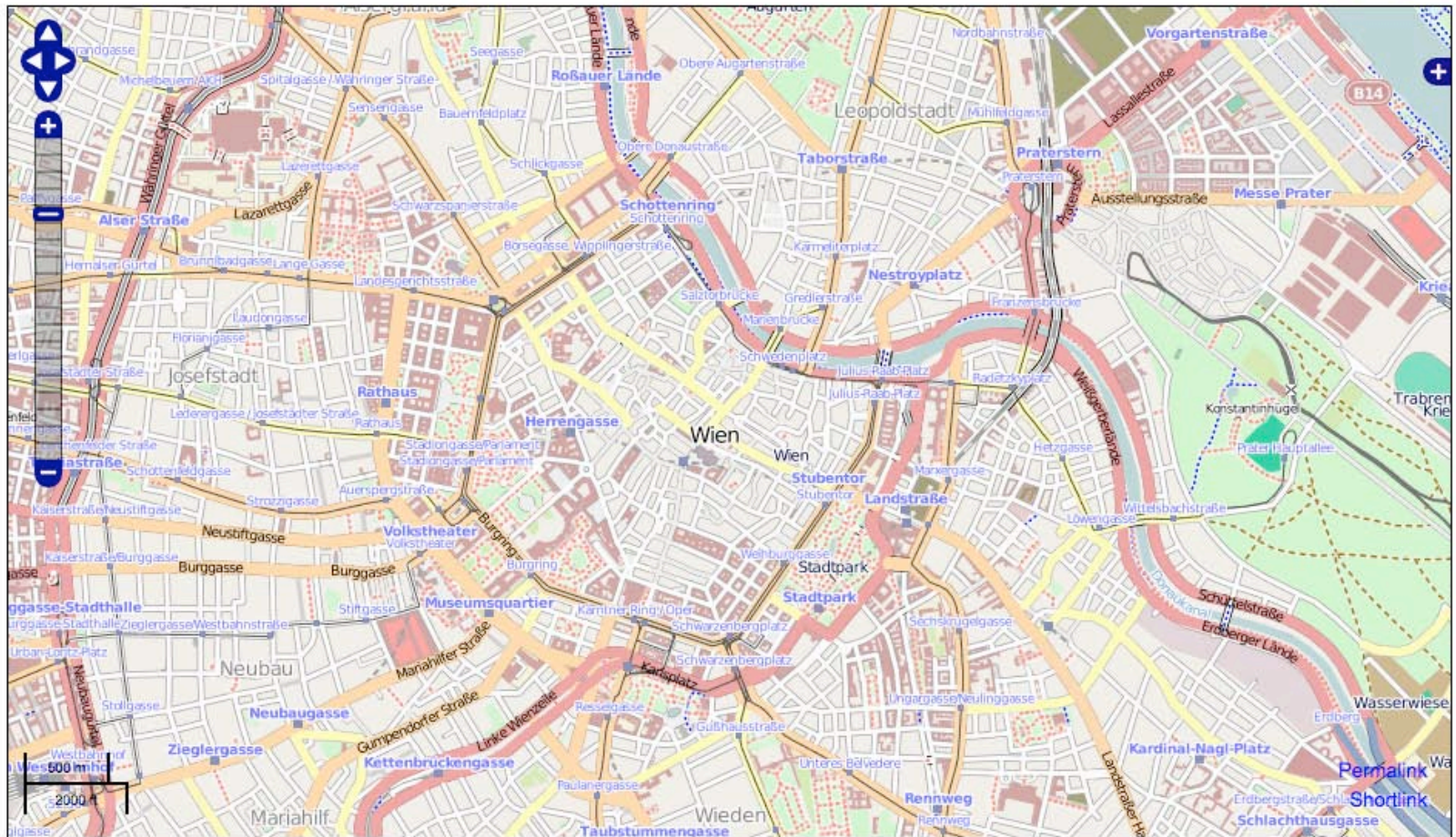
**Help & Wiki**  
[News blog](#)  
[Shop](#)  
[Map key](#)

Search [Where am I?](#)

examples: 'Alkmaar', 'Regent Street, Cambridge', 'CB2 5AQ', or 'post offices near Lünen' [more](#)

[View](#) [Edit](#) [History](#) [Export](#) [GPS Traces](#) [User Diaries](#)

[log in](#) | [sign up](#)

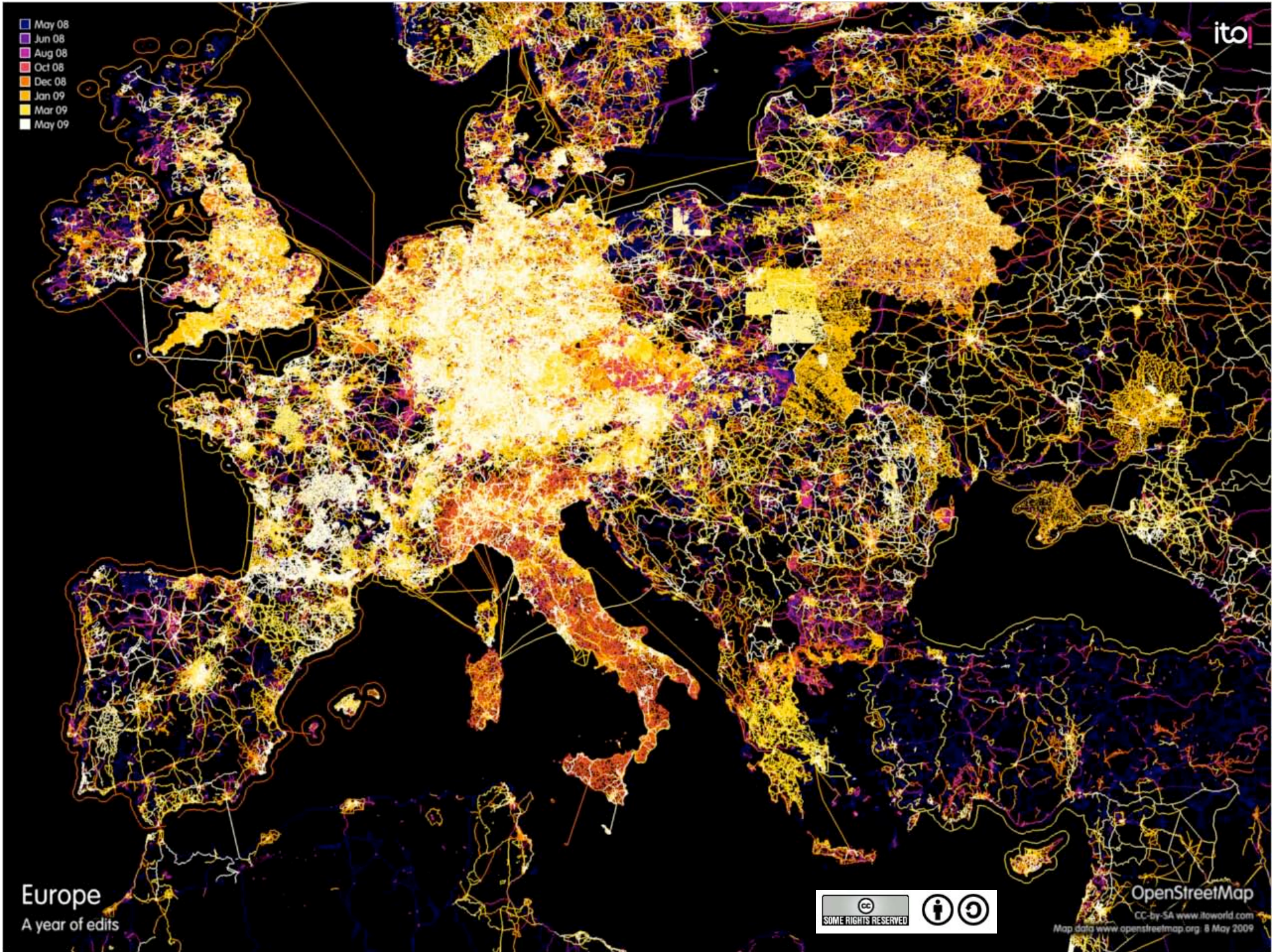


# OpenStreetmap



<http://share.gigapan.org/viewGigapan.php?id=28013>

- May 08
- Jun 08
- Aug 08
- Oct 08
- Dec 08
- Jan 09
- Mar 09
- May 09



Europe  
A year of edits



OpenStreetMap  
CC-by-SA www.itoworld.com  
Map data www.openstreetmap.org 8 May 2009

**Web 2.0, maps and informing**





Map Satellite Hybrid

Site Image Story

Site: Wyperfeld National Park  
Country: Australia

> [View detailed site information](#)  
> [View site in Google Earth](#)

Imagery ©2008 TerraMetrics, NASA, Map data ©2008 Europe, Technologies - Terms of Use

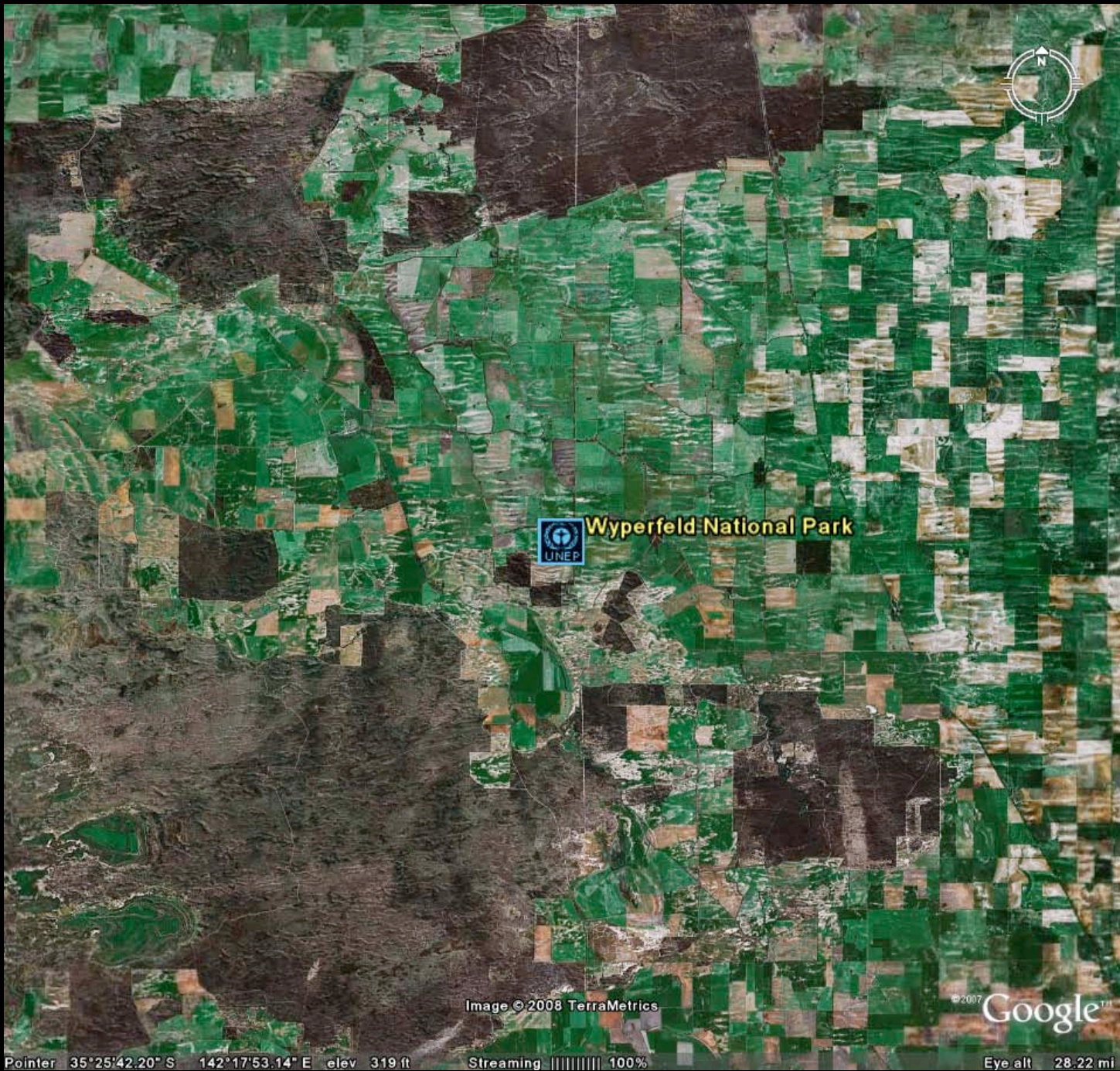
Site Navigation

Alphabetical List

- [Addis Ababa](#)
- [Almeria](#)
- [Al'Isawiyah](#)
- [Anqanqueo](#)
- [Aral Sea](#)
- [Arkhangelsk](#)
- [Atatürk Dam](#)
- [Athabasca Oil Sands](#)
- [Baniul](#)
- [Beijing](#)
- [Beira Fire Scars](#)
- [Brasilia](#)
- [Breidamerkuríökull](#)
- [British Columbia](#)
- [Bujumbura](#)
- [Cairo](#)
- [Campo-Ma'an Forest](#)
- [Challawa Dam](#)
- [Copperbelt](#)
- [Copsa Mica](#)
- [Country Border](#)
- [Damascus](#)
- [Dead Sea](#)
- [Delhi](#)
- [Dhaka](#)
- [Ekati](#)

Full Extent

**Directions:** To navigate the Atlas of Our Changing Environment, use the zoom and pan tools located at the top left corner of the map. Click on the icons on the map to view each site with detailed information located on our website and in Google Earth.



Wyperfeld National Park

Image © 2008 TerraMetrics

© 2007 Google™

Pointer 35°25'42.20" S 142°17'53.14" E elev 319 ft Streaming ||||| 100% Eye alt 28.22 mi

**Web 2.0, maps and community publishing**



e.g., "sussex street sydney 2000" or "hotels near sydney"

Search Maps Show search options

Search the map Find businesses Get directions

Search Results My Maps

View in Google Earth Print Send Link to this page

Save to My Maps

### Redfern-Waterloo TOUR of BEAUTY Nov 17 2007

REDFERN-WATERLOO TOUR OF BEAUTY SPECIAL TOUR! from Gymea to Redfern and back!

Sites we will visit on the bus tour include:

- \* The Block, the heart of indigenous housing and culture in Sydney
- \* The Settlement, Australia's longest running community centre
- \* Redfern Public School, Redfern Courthouse, Rachel Forster Hospital, all slated for private sale and development
- \* The public housing towers in Waterloo (pictured above)
- \* The Danks St gallery precinct (SOCS) - "a little piece of Paddington in Waterloo".
- \* Redfern Oval (traditional home of the South Sydney Rabbitohs) which the local community wants to have converted into a sports facility for public use.

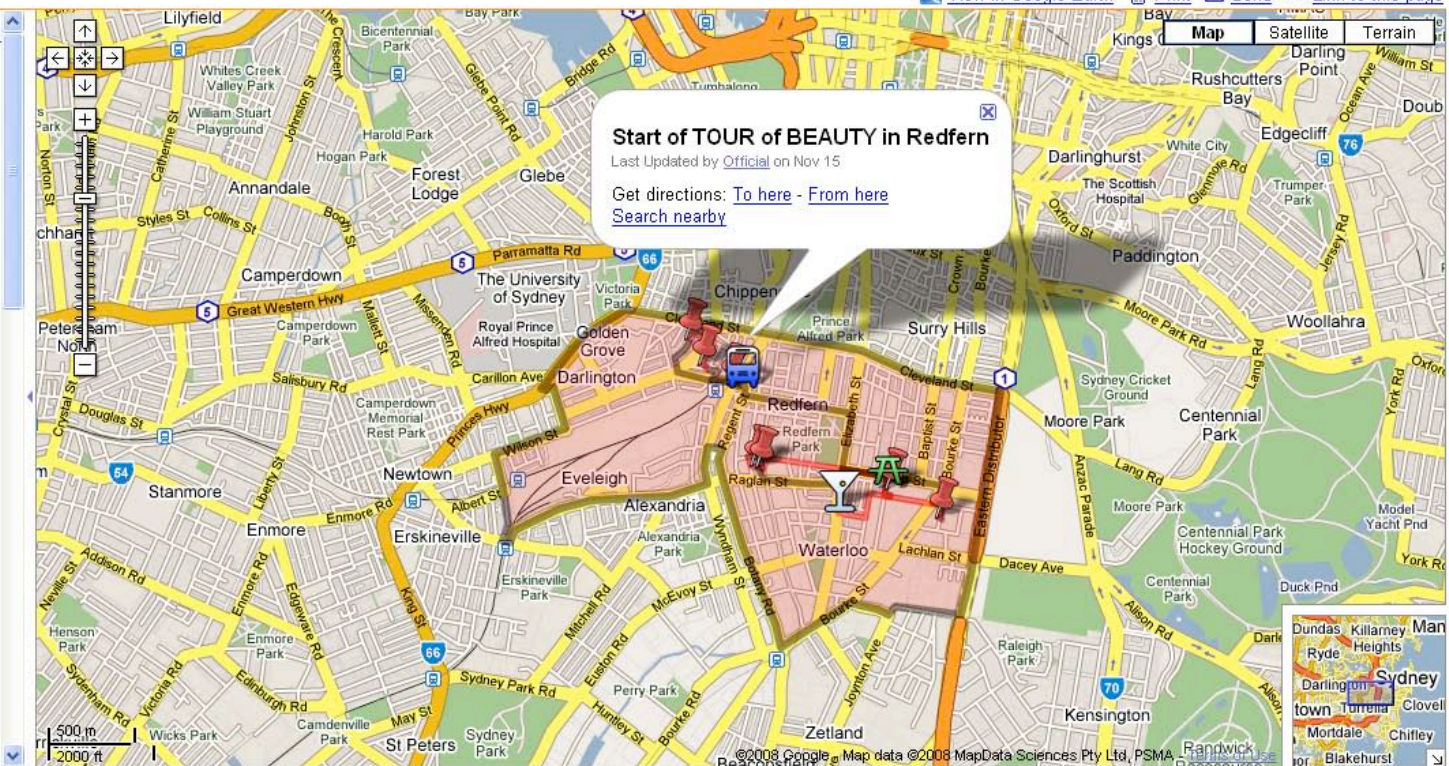
For more information on the project please go to [squatspace.com/redfern](http://squatspace.com/redfern)

936 views - Public

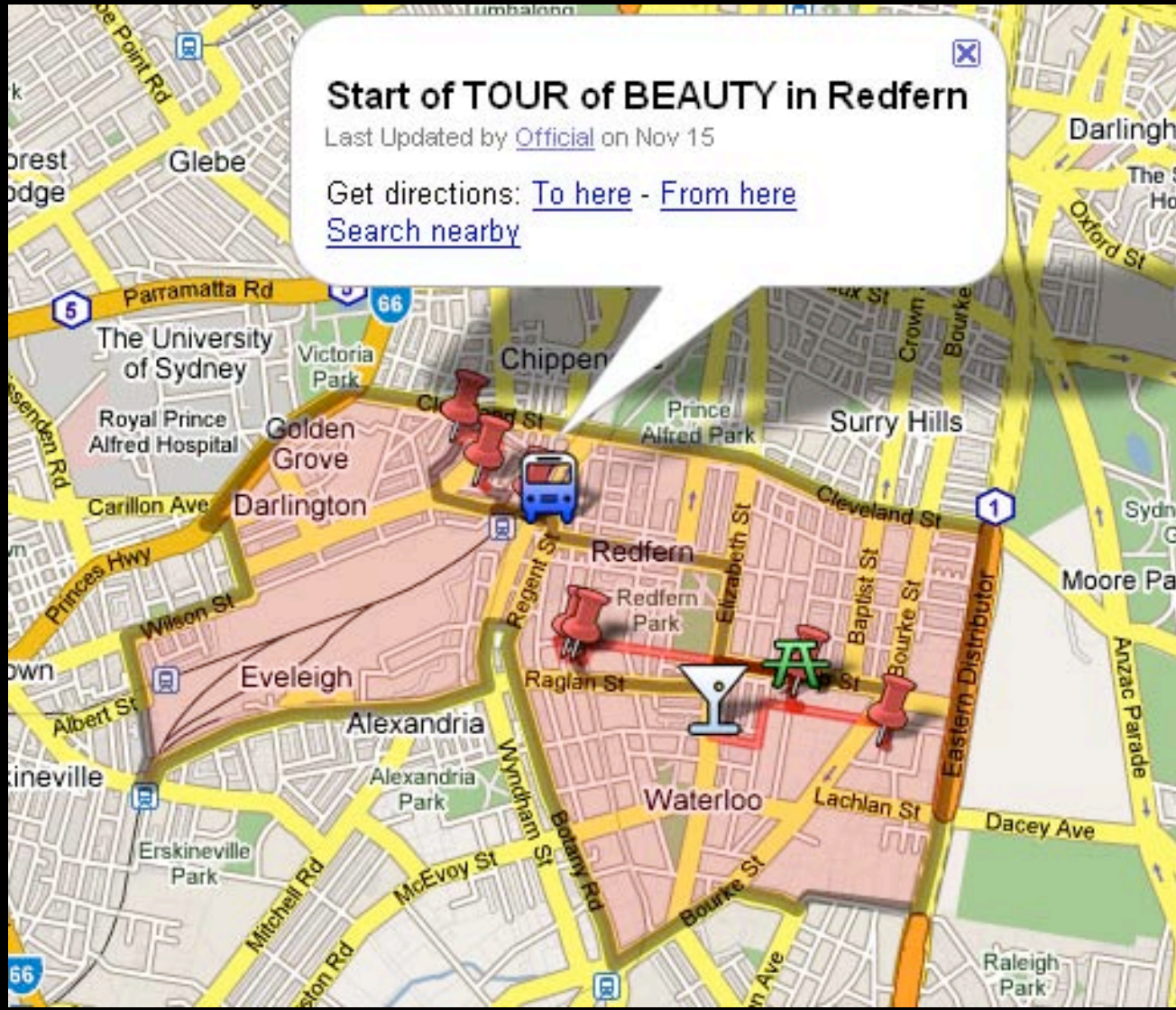
Created on Nov 14 - Updated Nov 15

By Official

Rate this map - Write a comment



Redfern/Waterloo Tour Of Beauty



### Start of TOUR of BEAUTY in Redfern

Last Updated by [Official](#) on Nov 15

Get directions: [To here](#) - [From here](#)  
[Search nearby](#)

Redfern/Waterloo Tour Of Beauty



**CAMPAIGNS**

See all Campaigns

Forests

Tasmanian Forests

In this section

- Protecting Forests, Growing Jobs
- Upper Florentine self-drive guide
- Styx self-drive and walking guide
- 'PEFC-approved' - the unsustainable stamp of approval
- Gunns Law Suit Against The Wilderness Society & Others
- Latest Campaign Updates
- Latest Media Releases
- Latest Events

Subtopics

- Gunns' Proposed Pulp Mill
- Styx Valley
- Tarkine

Related topics

- Gunns' Proposed Pulp Mill
- Tasmania



Home > Campaigns > Forests > Tasmanian Forests

Print this page | Email to a friend

## Tasmania's devastating logging practices exposed

Ever wanted to see the devastating impact that logging is having on the Tasmanian landscape?

It is now possible to see the huge scale on which Tasmania's forests are being destroyed.

Each year in Tasmania, approximately 15,000 hectares of native forest are destroyed. The magnitude of this is hard to grasp but the following overlays for Google Earth now make it possible.

A total of 155 areas, totalling 57 square kilometres, of native forest will be permanently cleared of forest and converted to plantations in this year. This landclearing is devastating our biodiversity and water catchments.

**Download Google Earth Overlay:**  
[Tasmanian logging coupes](#) | [Gunns' proposed pulp mill and existing mills](#)

**Quick start:** Download either or both (.kzm) files to your computer. Double-click them and it should automatically launch Google Earth. *Need more help?*

**Quick tips:**

- Double click on overlay icons . A pop up will give you more info. To see overlay map (from Forestry Tasmania), choose 'Download Google Earth overlay map'
- To automatically zoom into an area click on coupe border. You may need to get closer first.
- Special feature:* After launching Gunns' woodchip mill overlay, click on a mill and from the pop-up choose 'See Japanese Paper Mills'.

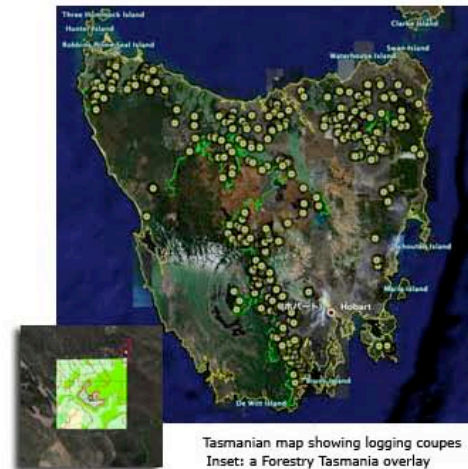
Google Earth is a free program which enables you to view satellite images of any location in the world using your internet connection. By downloading these overlays into Google Earth, you can see all of the planned logging in Tasmania's public native forests for the 2006-2007 year. However, selective logging and contingency coupes are not yet included.



Once you have downloaded the overlays, you will see each planned logging coupe. As you zoom in you will see, in addition to the placemark circles, the outline of each coupe. Clicking in the placemarks will reveal further information about each logging operation.

Coupes with an orange border will be clearfelled and then replaced with tree plantations. Areas with a pink border will be clearfelled, allowed to regrow to native forest, and then placed on a logging rotation. Yellow areas are other types of logging, such as aggregated retention or clump clearfelling, but not including selective logging. Areas with green borders are reserves - these boundaries are still being worked on. Reserves are, at this stage, only included if logging is occurring close by.

To find out what much of this wood is destined for, you can also download overlays showing the locations of Gunns Ltd's Tasmanian woodchip mills. Zooming in to these locations will show you piles of woodchipped forest awaiting export. Clicking on the placemark circle will reveal further information, including a



Tasmanian map showing logging coupes  
Inset: a Forestry Tasmania overlay

**TAKE ACTION**

Pledge your support to stop the Pulp Mill >

More Cyberactions >

**EBULLETIN**

Subscribe to our newsletters.

JOIN

more >

**JOIN NOW**

You can help save Australia's environment by becoming a member today. [more >](#)

**DONATE**

Support sustainable solutions for our environment. [more >](#)

**LEAVE A BEQUEST**

Help protect Australia's wilderness for future generations. [more >](#)

**WILDSHOP**

Australia's premier online shop for nature gifts. [more >](#)

**VOLUNTEER**

Be part of the solution - volunteer with us! [more >](#)

**Work for Wilderness**

Help us raise public awareness and support

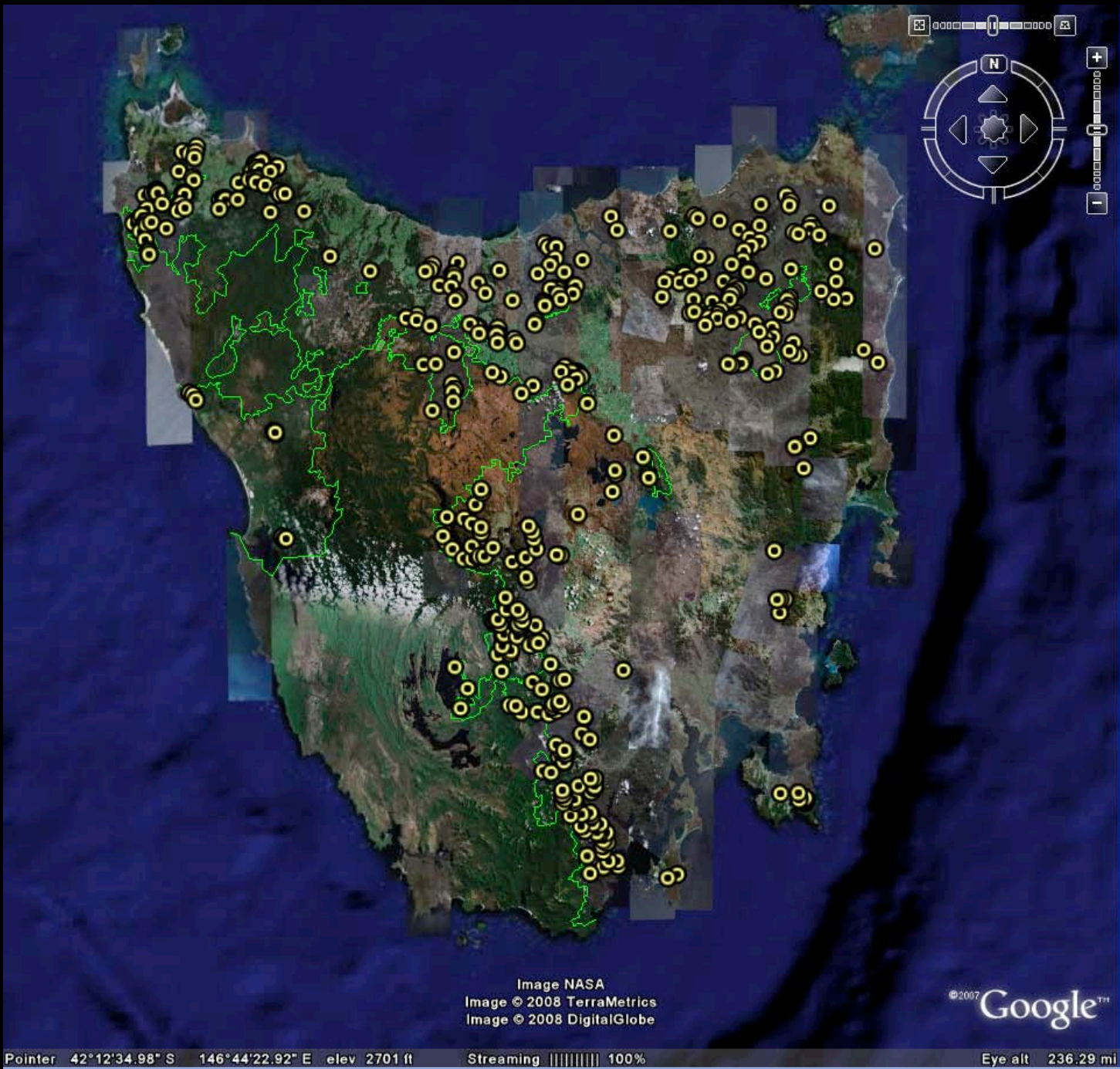
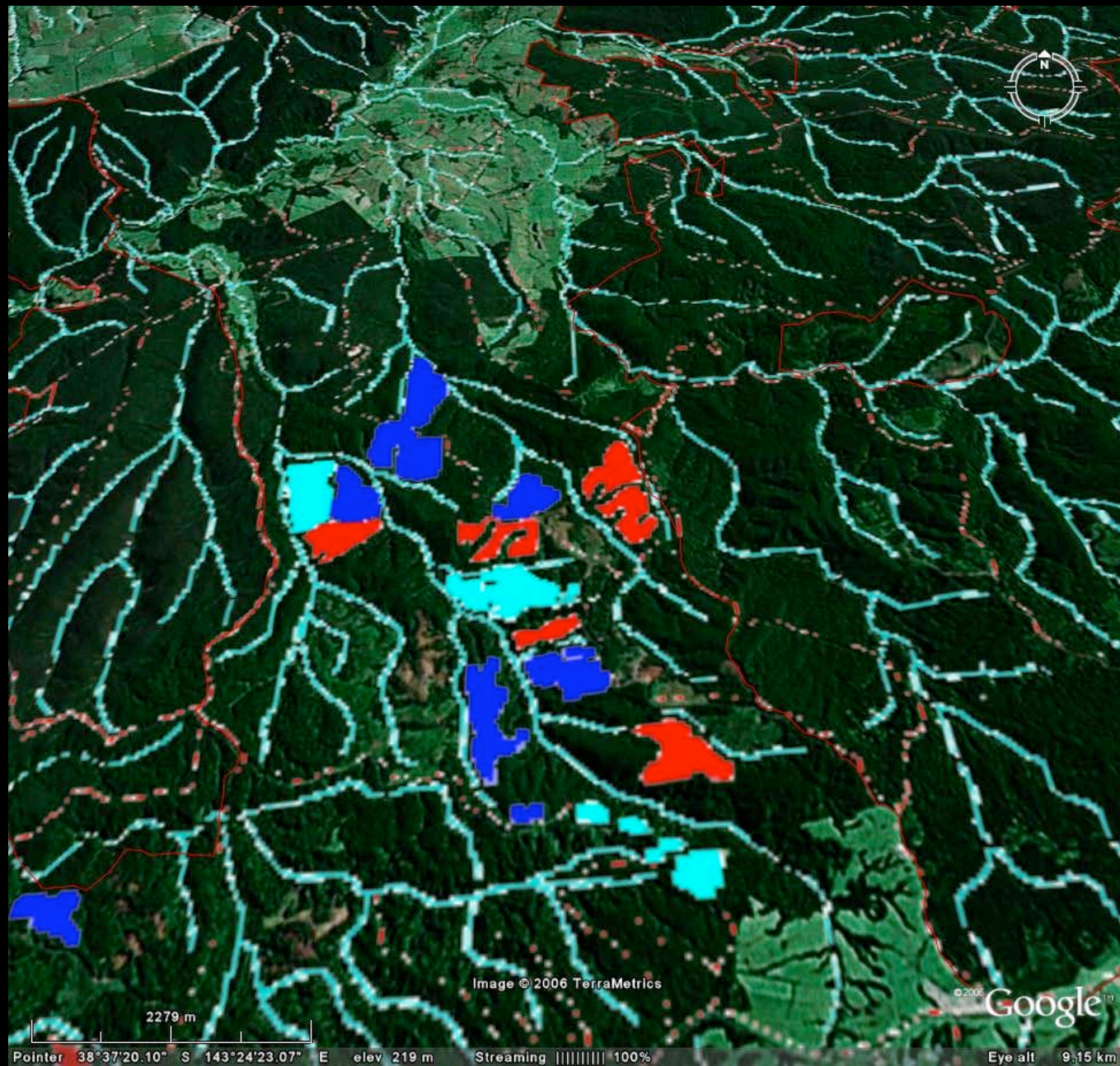


Image NASA  
Image © 2008 TerraMetrics  
Image © 2008 DigitalGlobe

©2007 Google™

Pointer 42°12'34.98" S 146°44'22.92" E elev 2701 ft Streaming ||||| 100% Eye alt 236.29 mi



Otway Ranges Environment Network

<http://www.oren.org.au/oren/ge.html>





Bad Developers

<http://www.baddevelopers.green.net.au/Docs/gmw.htm>



Bad Developers

Southern Rural Water also using Acrolein

The orange indicates approximate location of channels sprayed with Acrolein in January and November 2005

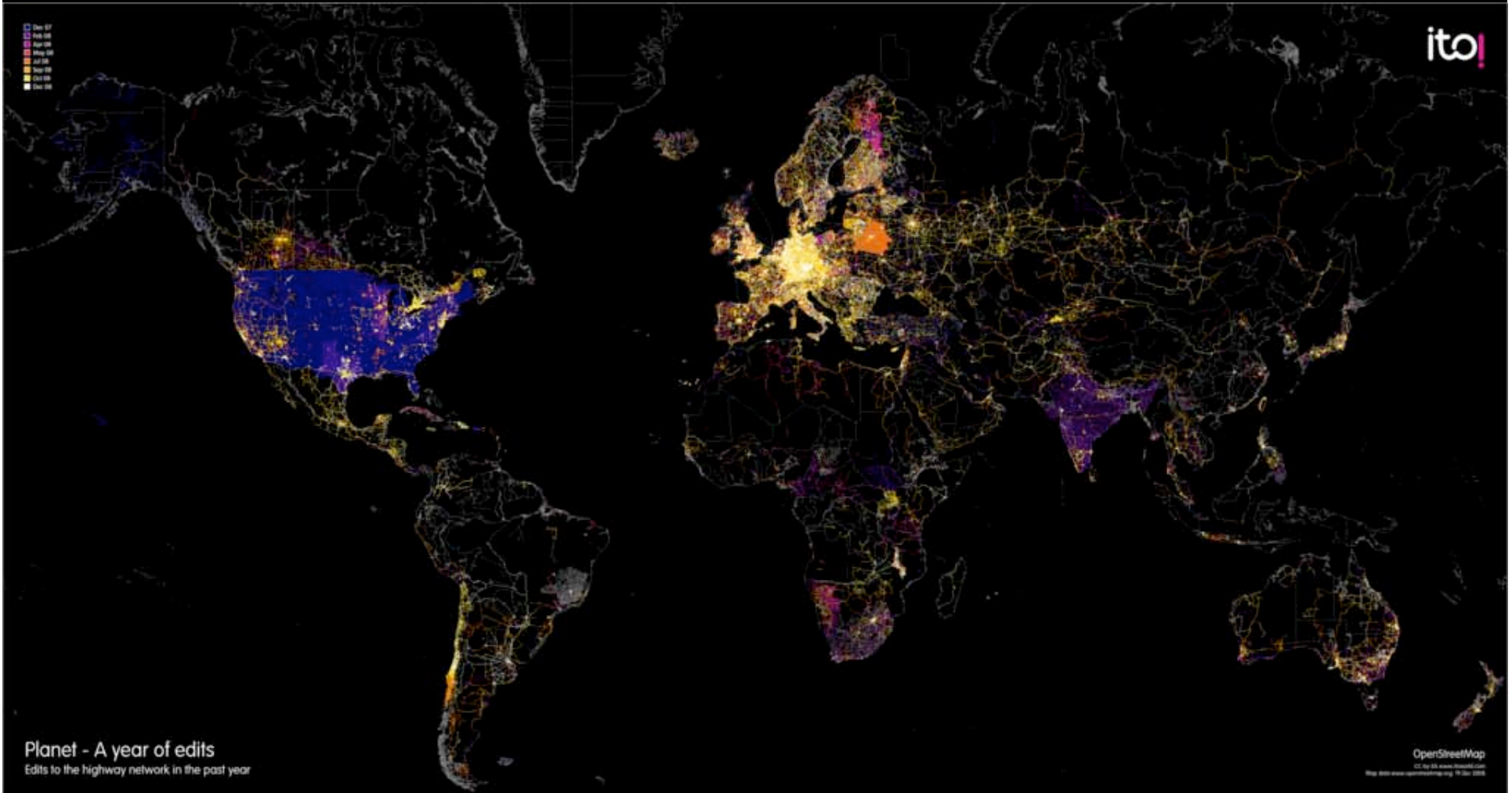
<http://www.baddevelopers.green.net.au/Docs/gmw.htm>

**Change in how users access, use and publish  
geographical information**

**Issues to be addressed by the  
cartographic community**

**Accuracy**  
**Currency**  
**Coverage**

- Jan 07
- Feb 08
- Mar 09
- Apr 10
- May 11
- Jun 12
- Jul 13
- Aug 14
- Sep 15
- Oct 16
- Nov 17



Planet - A year of edits  
Edits to the highway network in the past year

# Other issues

Hidden data provision agenda

Data scraping = data theft

“Just good enough” mindset

Anonymous collectors

# Data access and exploitation





# Research relating to 'different' use of geospatial information

Collaborative publishing

Collaborative decision-making

Collaborative problem solving



**"The wisdom of the crowds" (Random House)**

James Surowiecki - *The New Yorker*

**Ask a crowd , rather than a pair, and the average is quite close to the truth.**

**Massive  
galaxy**

**Mystery  
Blob**

*vooverp*

# Changes in strategies

- Conventional and Web maps
  - 'Packaged' products
- Web 2.0
  - Collaborative outcomes
- Where 2.0
  - Geo-located outcomes

# Public and private partnerships

## Government and profession

Data collection,  
maintenance  
and provision



Data use and  
representation

# Public and private partnerships

Government and profession

Data collection,  
maintenance  
and provision

Data use and  
representation

Individuals and organisations

Data collection

Data use and  
representation

# Public and private partnerships

Government and profession

Individuals and organisations

Data collection,  
maintenance  
and provision



Data use and  
representation

# Public and private partnerships

Government and professional

Data collection,  
maintenance  
and provision



Data use and  
representation

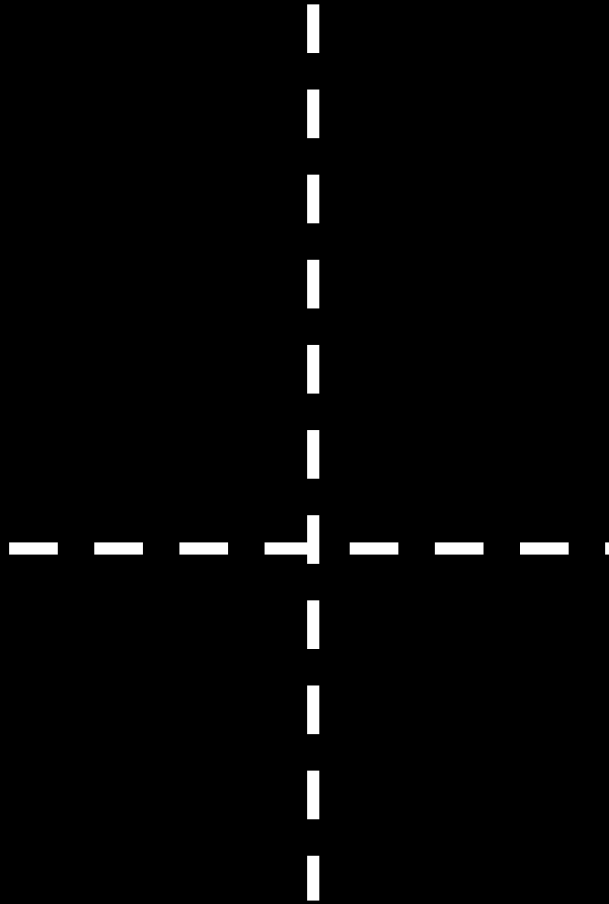


# Public and private partnerships

Data collection  
Data use and  
representation  
and provision

Government and professional associations

# Public and private partnerships



**Public and private partnerships**

**Boundaries are gone**

# Web 2.0 and changing landscapes

- The way in which information is accessed
- New ways of using products
- Users can be the map producer
- Data assembled from many discrete and dispersed sites
- Plethora of devices to generate maps and visualization products
- Many products available to visualise geography
- Not just maps to inform about geography, but also many 'mainstream' media



## Web 2.0 and ICA activities



# Research Agenda on Cartography and GI Science

- Geographic Information
- Metadata and SDIs
- Geospatial Analysis and Modelling
- Usability
- Geovisualization, Visual Analytics
- Map production
- Cartographic Theory
- History of Cartography and GI Science
- Education
- Society

# Commissions



# & Working Groups

## COMMISSIONS

- Cartography and Children
- Digital Technologies in Cartographic Heritage
- Education and Training
- Generalisation and Multiple Representation
- Geospatial Analysis and Modeling
- Geospatial Data Standards
- Geovisualization
- History of Cartography
- Management and Economics of Map Production
- Mapping from Satellite Imagery
- Map Projections
- Maps and Graphics for Blind and Partially Sighted People
- **Maps and Society**
- **Maps and the Internet**
- Marine Cartography
- Mountain Cartography
- National and Regional Atlases
- Planetary Cartography

- Theoretical Cartography
- Ubiquitous Mapping
- Underrepresented Groups and Cartography
- **Use and User Issues**

## WORKING GROUPS

- Art and Cartography
- Cartography in Early Warning and Crisis Management
- Census Cartography
- GIS and Sustainable Development
- Mapping Africa for Africa
- Open Data Access and Intellectual Property Rights
- **Open Source and Geospatial Technologies**
- Tourist Cartography

**Thank you**